

MONTGOMERY COUNTY REGIONAL SEWER DISTRICT

RESOLUTION No. 2012- 3

RESOLUTION REGARDING SANITARY SEWER EASEMENT

WHEREAS, on February 7, 2012, the Montgomery County Regional Sewer District (the "District") adopted its Resolution N. 2012-2, which among other things exercised the District's Option to Purchase Easement (the "Option") with Nucor Corporation, for an easement for a sanitary sewer line to service the Ceres Solutions, LLP property, as more particularly described on Exhibit "A" attached to and made part of this Resolution by reference; and

WHEREAS, Nucor Corporation is willing to grant the easement pursuant to the terms of the Option, but has asked that the District and its engineers review the plans and specifications for the sewer project to determine if it is feasible to provide sanitary sewer service to the Ceres Solutions, LLP property directly from the public road, without the need for an easement across the Nucor property; and

WHEREAS, the District finds that the Option should be exercised and the easement should be acquired, but that its engineers should investigate whether it is feasible to relocate the sewer line so as to eliminate the need for the Nucor easement.

BE IT THEREFORE RESOLVED by the Board of Trustees of the District that the Option to acquire the easement described on Exhibit "A" shall be exercised, and the easements described thereon should be acquired, pursuant to Resolution No. 2012-2, but that the District's engineers shall investigate to determine whether it is feasible to provide sanitary sewer service to Ceres Solutions, LLP directly from the public road, without the need for the Nucor easement, and to report their findings and recommendations to the Board of Trustees.

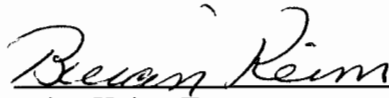
ALL OF WHICH IS ADOPTED THIS 27TH DAY OF FEBRUARY, 2012, BY THE MONTGOMERY COUNTY REGIONAL SEWER DISTRICT.

**MONTGOMERY COUNTY
REGIONAL SEWER DISTRICT**

Phillip W. Bane, Trustee


Terry Hockersmith, Trustee


Bill Henderson, Trustee


Brian Keim, Trustee

Michael Plant, Trustee

EXHIBIT "A"

**Nucor Corporation – Section 36
54-10-36-200-003.000-025**

SANITARY SEWER EASEMENT

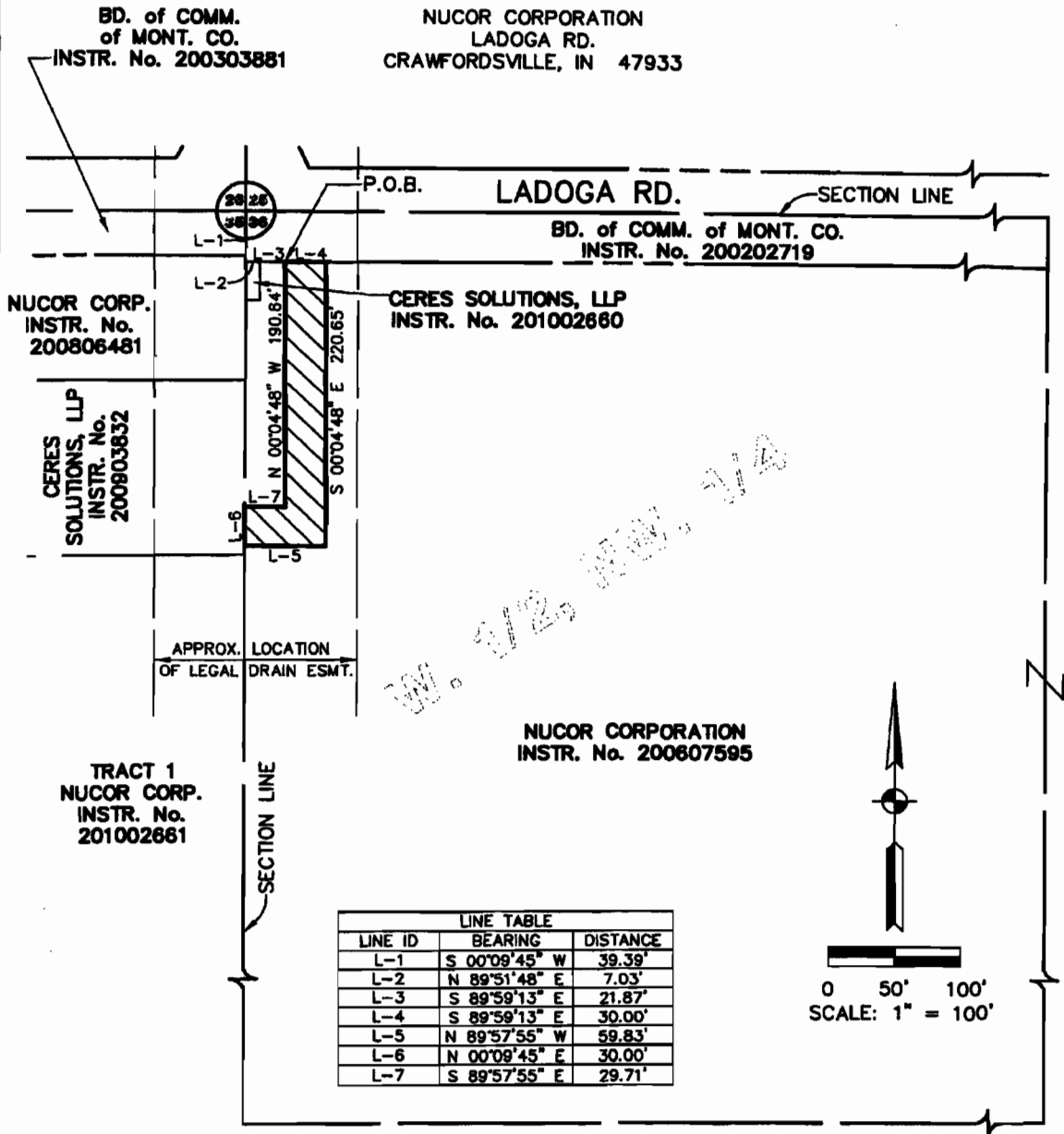
An Easement in the West Half of the Northwest Quarter of Section 36, Township 18 North, Range 4 West of the Second Principal Meridian, South Union Township, Montgomery County, Indiana and being that part of the grantor's land as described in Instrument Number 200607595 in the office of the Recorder of said County and State, more particularly described as follows:

Commencing at the northwest corner of said section; thence South 00 degrees 09 minutes 45 seconds West 39.39 feet along the west line of said section to the south line of a parcel conveyed to the Board of Commissioners of Montgomery County by Instrument Number 200202719; thence North 89 degrees 51 minutes 48 seconds East 7.03 feet along said south line; thence South 89 degrees 59 minutes 13 seconds East 21.87 feet continuing along said south line to the Point of Beginning of this description: thence continuing South 89 degrees 59 minutes 13 seconds East 30.00 feet along said south line; thence South 00 degrees 04 minutes 48 seconds East 220.65 feet; thence North 89 degrees 57 minutes 55 seconds West 59.83 feet to the west line of said section; thence North 00 degrees 09 minutes 45 seconds East 30.00 feet along said west line; thence South 89 degrees 57 minutes 55 seconds East 29.71 feet; thence North 00 degrees 04 minutes 48 seconds West 190.64 feet to the POINT OF BEGINNING and containing 0.172 acres, more or less, subject to all pertinent rights-of-way and easements.

Basis of Bearings is a Location Control Route Survey Plat prepared by VS Engineering, Inc. recorded as Instrument No. 201104153, Dated: August 22, 2011.

EXHIBIT "A"
PAGE 2 OF 2

SANITARY SEWER EASEMENT



EASEMENT AREA

LEGEND

	RIGHT-OF-WAY
	PROPERTY LINE
	EXST. EASEMENT

SANITARY SEWER EASEMENT
PT. OF W 1/2, NW 1/4, SEC. 38, T18N, R4W
SOUTH UNION TOWNSHIP, MONTGOMERY COUNTY, INDIANA

NUCOR CORPORATION
INSTRUMENT NUMBER 200607595
STATE PARCEL No. 54-10-36-200-003.000-025

Scale: 1"=100'
Proj. No. 10-2841
Drawn By: JAG
Checked By: MRH
Date: 08/22/2011

THIS EXHIBIT WAS PREPARED BY:



VS ENGINEERING, INC.

4275 N. HIGH SCHOOL RD. INDIANAPOLIS, INDIANA 46254
TEL. (317) 293-3542 FAX: (317) 293-4737